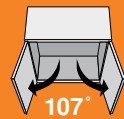


# CLIP top 107° hinges



CLIP top/CLIP



## Features

- 107° opening angle
- 3-dimensional adjustment
- All metal hinge, nickel plated
- Available with INSERTA tool-free attachment
- 86° angle restriction clips available (page 31)

Cover caps  
Mounting plates

page 31  
pages 47-52

## Minimum Reveal

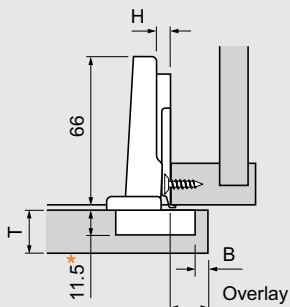
Minimum reveal table					
0.6	1.0	1.3	1.7	2.5	<b>3</b>
0.6	1.0	1.3	1.6	2.4	<b>4</b>
0.6	1.0	1.2	1.5	2.2	<b>5</b>
0.6	1.0	1.2	1.4	2.0	<b>6</b>
<b>16</b>	<b>18</b>	<b>19</b>	<b>20</b>	<b>22</b>	<b>B</b>
T Door thickness					Bore

Cross-reference the door thickness and bore distance to assure that doors won't bind when opened.

For door thickness greater than 22mm trial application recommended or use Thick door hinge (page 18).

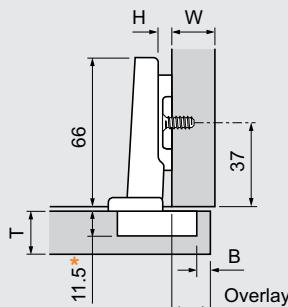
## Frame cabinet applications

### Overlay door



## Panel cabinet applications

### Overlay door



See back cover fold out for more specifications →

## Straight-arm hinges

	Self close	Free swing
Screw-on	<b>75T1550</b>	<b>74T1550</b>
Press-in	<b>75T1580</b>	<b>74T1580</b>
INSERTA	<b>75T1590B</b>	<b>74T1590B</b>

### Overlay table

0	14	15	16	17	10	21
3	11	12	13	14	13	24
4.5	9.5	10.5	11.5	12.5	14.5	25.5
6	8	9	10	11	16	27
9	5	6	7	8	19	30
<b>H</b>	<b>3</b>	<b>4</b>	<b>5</b>	<b>6</b>	<b>P</b>	<b>S</b>
Plate	B Bore distance				Clearances	

11 fixed distance

**NOTE:** 4.5 plate only available for face frame, 9 plate only available for panel cabinets

## Half-cranked hinges (9.5mm)

	Self close
Screw-on	<b>75T1650</b>
Press-in	<b>75T1680</b>
INSERTA	<b>75T1690B</b>

### Overlay table

	Partial overlay				
0	4.5	5.5	6.5	7.5	20 31
<b>H</b>	<b>3</b>	<b>4</b>	<b>5</b>	<b>6</b>	<b>P</b> <b>S</b>
Plate	B Bore distance				Clearances

1.5 fixed distance

### Reveal table

	Twin overlay					
0	7	5	3	1	16	20 31
	10	8	6	4	19	
	13	11	9	7	22	
<b>H</b>	<b>3</b>	<b>4</b>	<b>5</b>	<b>6</b>	<b>W</b>	<b>P</b> <b>S</b>
Plate	B Bore distance				Panel	Clearances

## Full-cranked hinges (18mm)

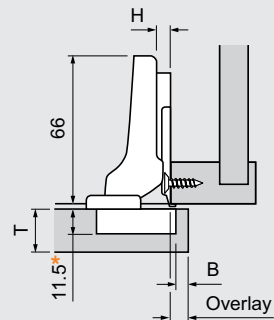
	Self close
Screw-on	<b>75T1750</b>
Press-in	<b>75T1780</b>
INSERTA	<b>75T1790B</b>

### Reveal table

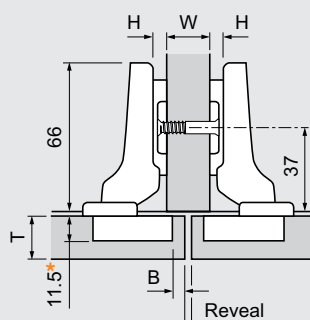
0	4	3	2	1	29	40
<b>H</b>	<b>3</b>	<b>4</b>	<b>5</b>	<b>6</b>	<b>P</b>	<b>S</b>
Plate	B Bore distance				Clearances	

- 7 fixed distance

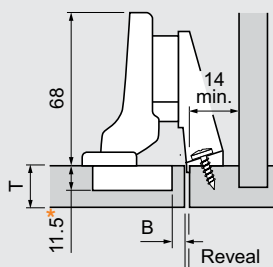
## Partial overlay door



## Twin overlay doors

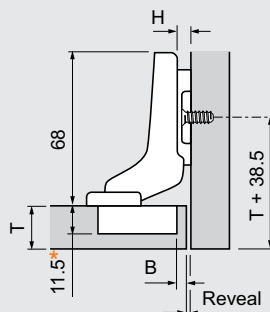


## Inset door



**NOTE:** For this application use a half-cranked hinge from above and mounting plate 175H5030.21

## Inset door



\* For INSERTA use a cup depth of 12

